



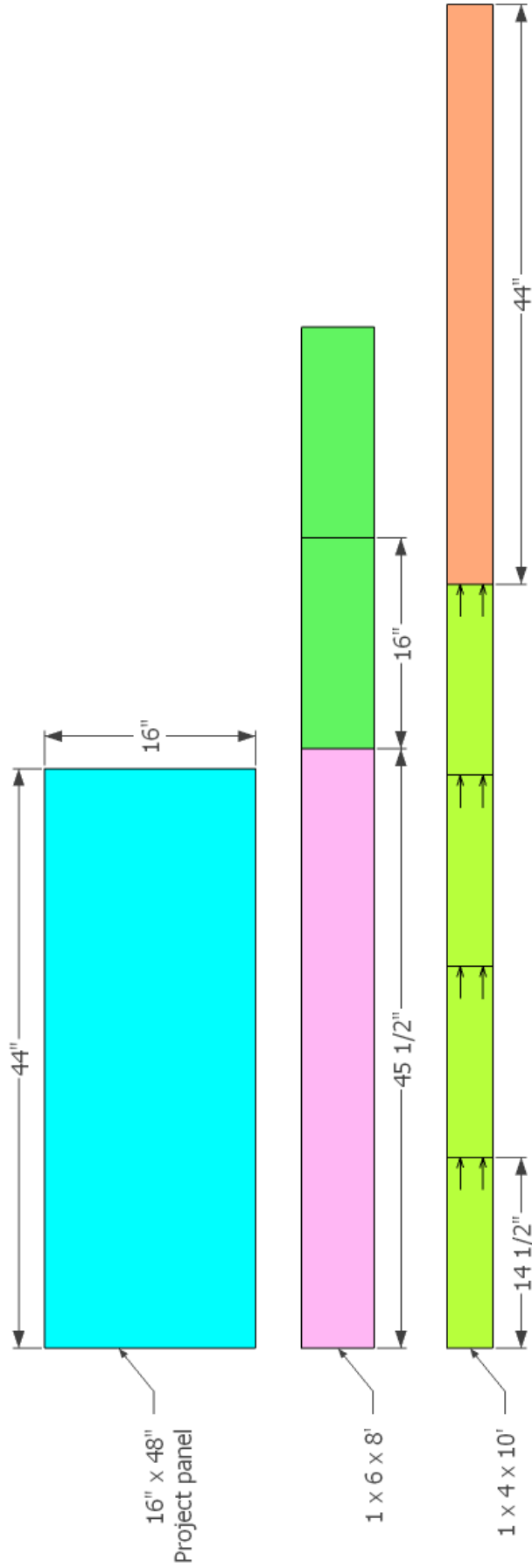
## DIY Corbel Desk

Copyright © 2014 Shanty-2-Chic.com

### Supply List

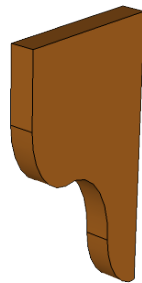
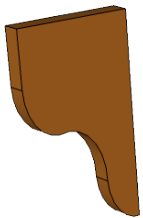
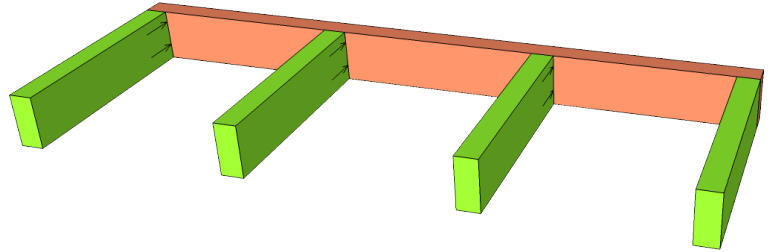
Item	Quantity	Description
16" x 48" project panel	1	For the top
2 x 4 x 10'	1	Pine or whitewood board
1 x 6 x 8'	1	Pine or whitewood board
Corbels	2	
2-1/2" pocket hole screws	8	
Brad nails	handful	
Wood glue		
Finish of choice		

Drill pocket holes for 2-1/2" pocket hole screws as indicated by the arrows.



1

First, assemble the frame of the shelf with glue and 2-1/2" pocket hole screws. The interior frame pieces are centered.

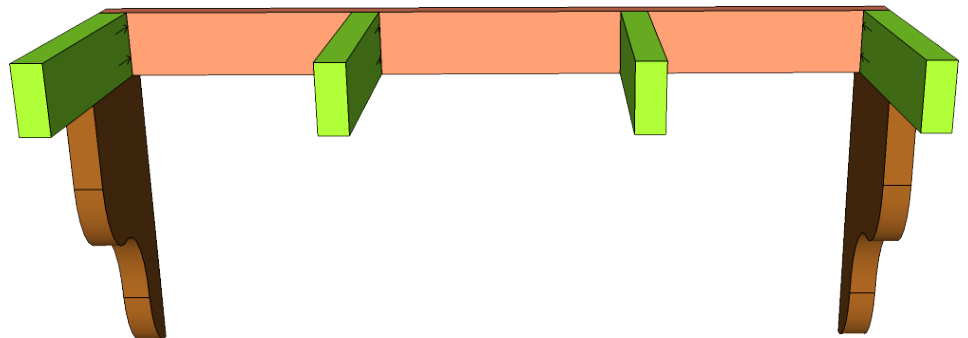


2

You can draw on the wall with a level and pencil where you want to mount the desk. Then mount the corbels to the wall in the correct location. My corbels did not get mounted to a stud. I used two drywall anchors and screws per corbel to mount them where needed.

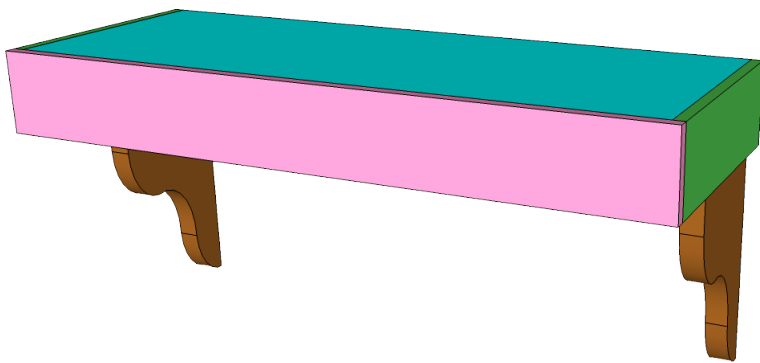
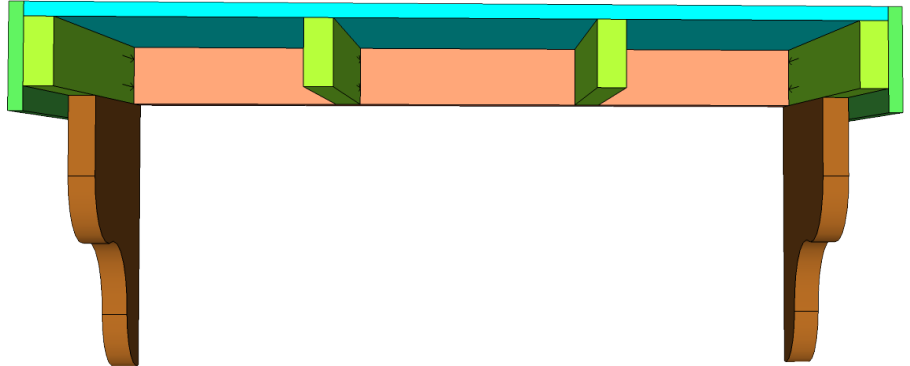
3

Next, set the desk frame on top of the mounted corbels. Use a stud finder to locate the studs in the wall. Pre-drill the mounting locations and secure it to the wall with two 3" wood screws into each stud.



4

For the top surface cut a 16" project panel to the correct length. Secure it to the frame with wood glue and brad nails. Then attach the side pieces with wood glue and brad nails as well.



5

Finally, add the front cap with wood glue and brad nails. Sand, stain, and finish as you desire. This is a super simple way to add some custom character to any room. Feel free to modify this design in any way. Be creative! If you decide to make your own corbel desk be sure to stop by our website and let us know!