

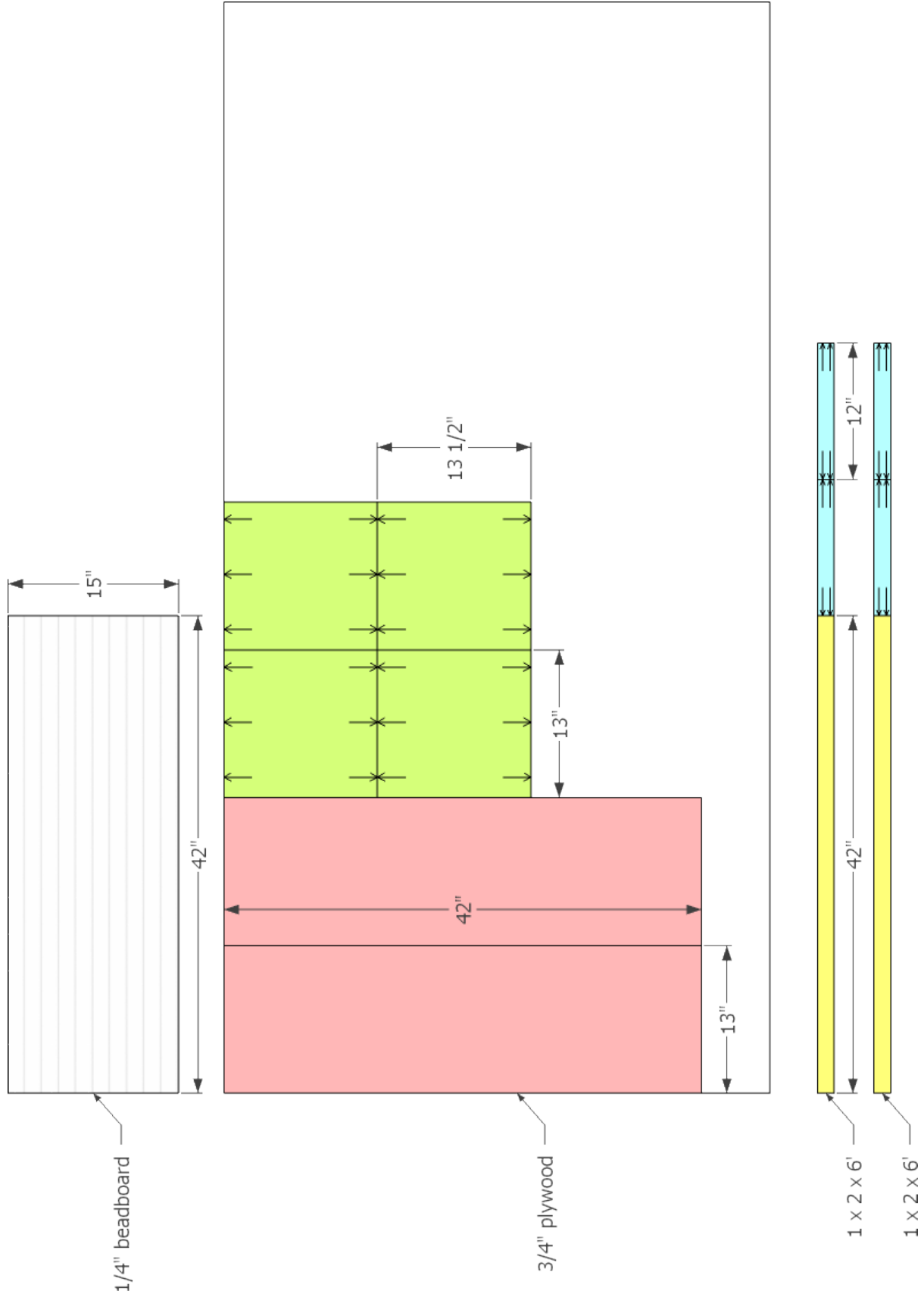
## Modular Closet Shelf Cabinet

Copyright © 2014 Shanty-2-Chic.com

### Supply List

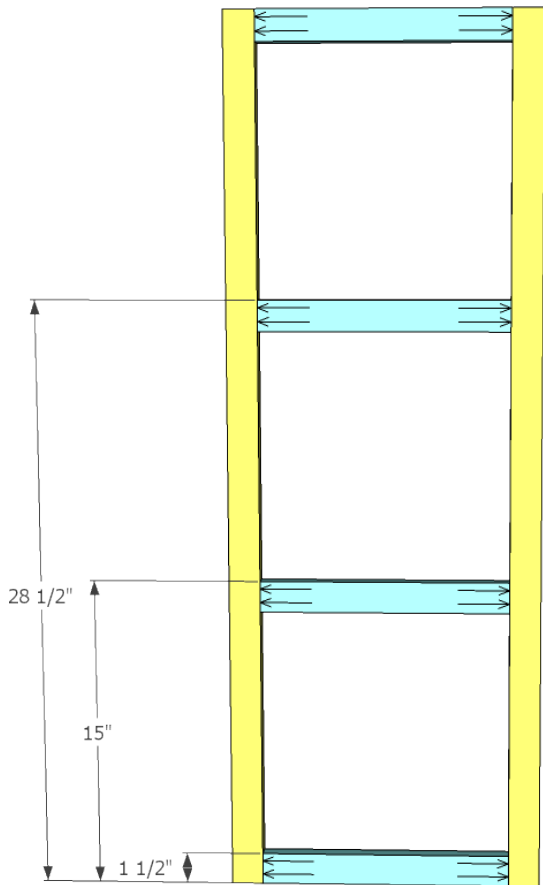
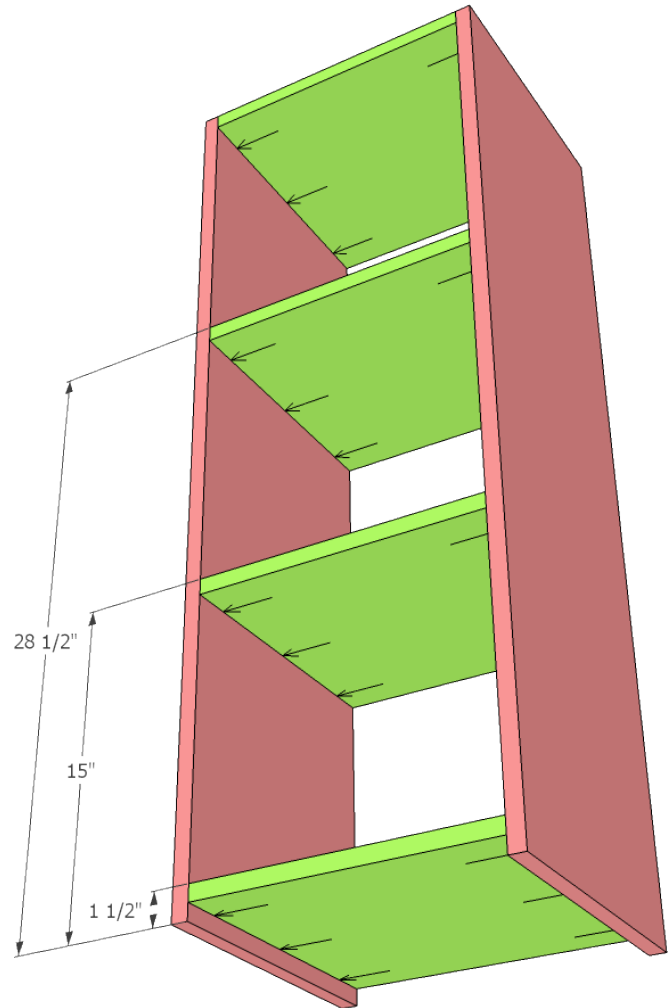
Item	Quantity	Description
42" x 15" x 1/4" beadboard	1	For the back
48" x 96" x 3/4" plywood	1	
1 x 2 x 6'	2	Pine or whitewood board
1-1/4" pocket hole screws	40	
Brad nails	handful	
Wood glue		
Finish of choice		

Drill pocket holes for 1-1/4" pocket hole screws as indicated by the arrows.  
 This project may appear to have a lot of extra 3/4" plywood but that's OK!  
 This is only one part of a series for a modular closet organization system.  
 You can use it for the next piece!



1

Assemble the plywood structure with the following measurements. Use wood glue and 1-1/4" pocket hole screws to secure the shelves to the sides.

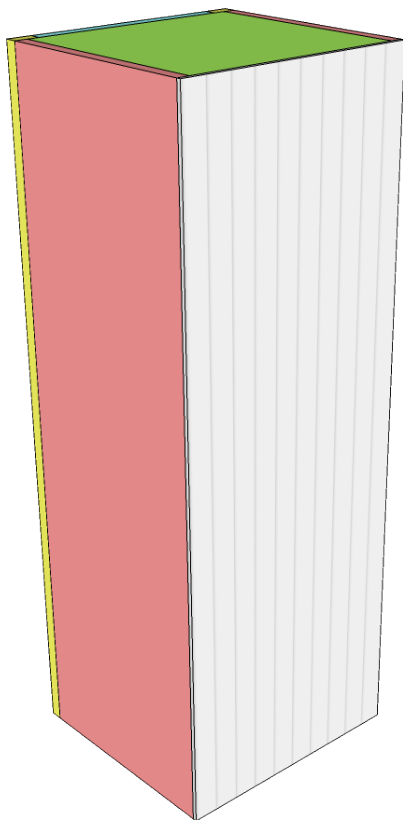
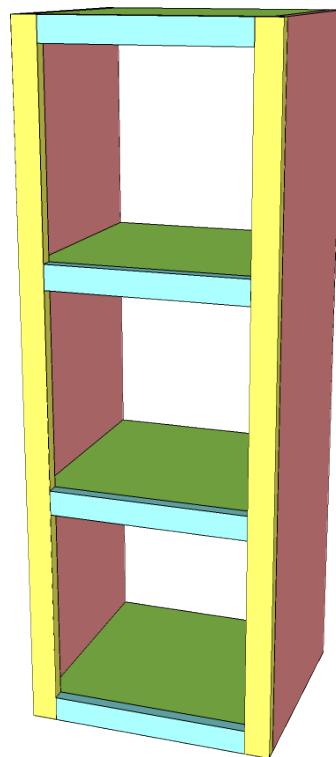


2

Using wood glue and 1-1/4" pocket hole screws again assemble the cabinet face frame with the same dimensions.

3

Use wood glue and brad nails to attach the face frame to the plywood assembly.



4

If you are going to paint the cabinet fill any nail holes, sand, and paint before you install the back. Once the paint has dried use brad nails only to attach the back panel. That's it! This is a super easy modular shelf system that will be part of a bigger closet system. If you decide to upgrade your closet with our closet system be sure to stop by our website and let us know!