

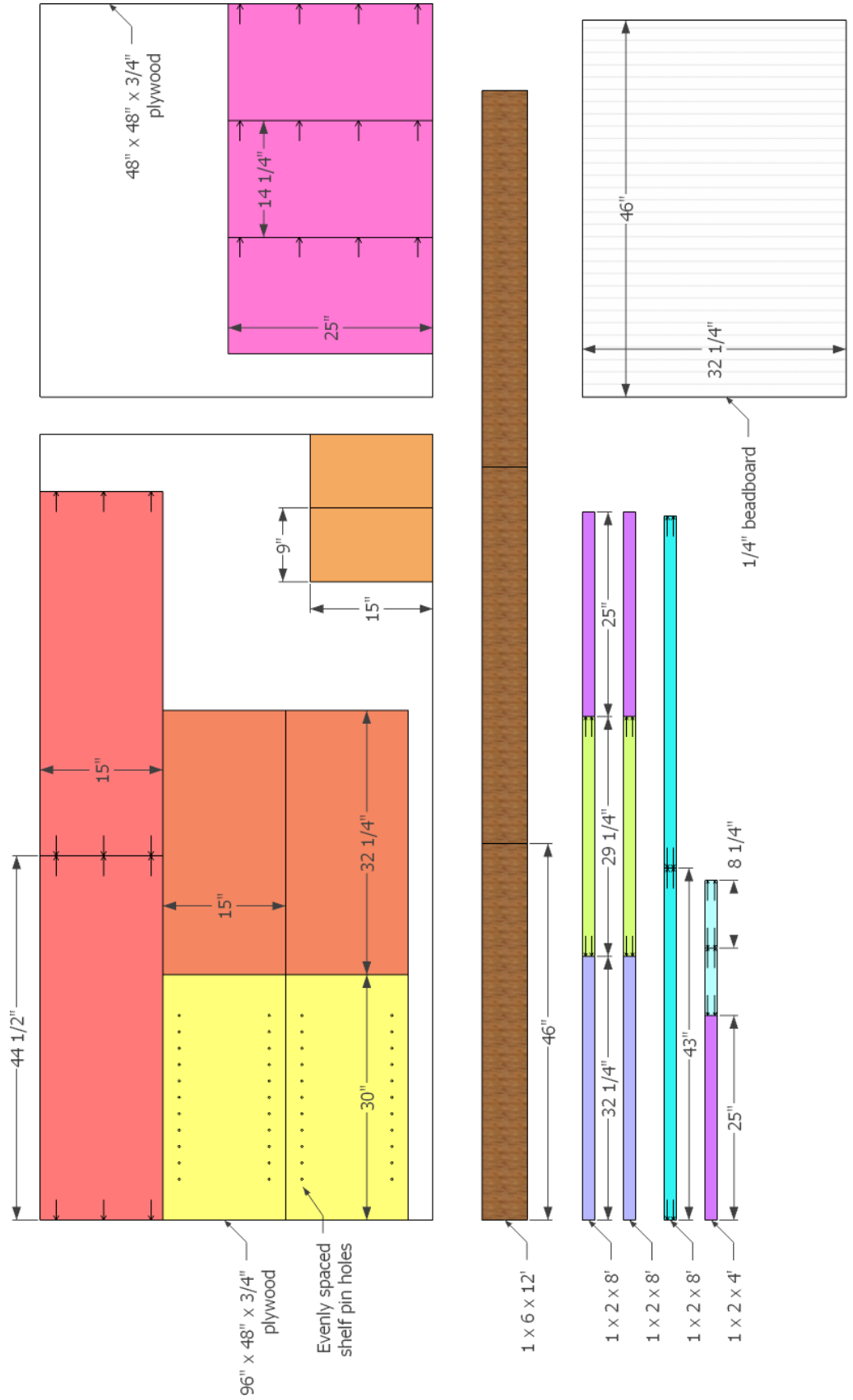
Modular Closet Shoe Cabinet

Copyright © 2014 Shanty-2-Chic.com

Supply List

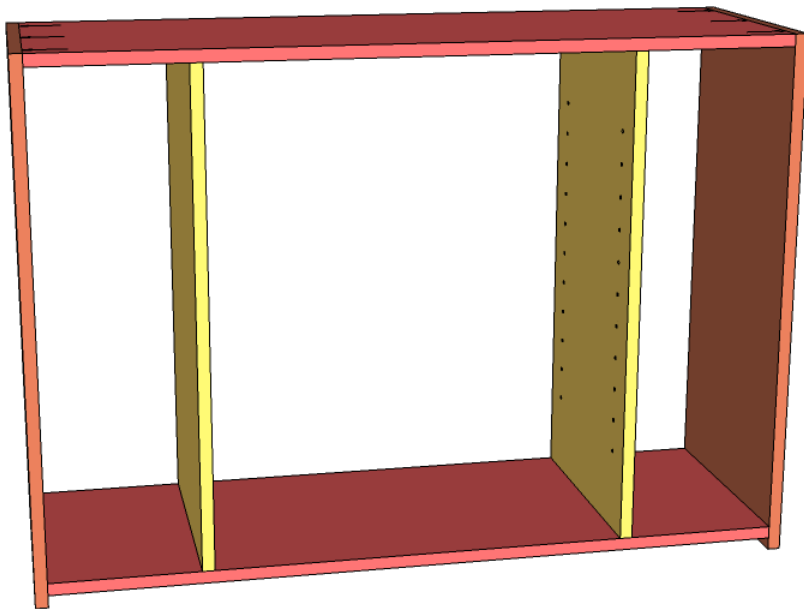
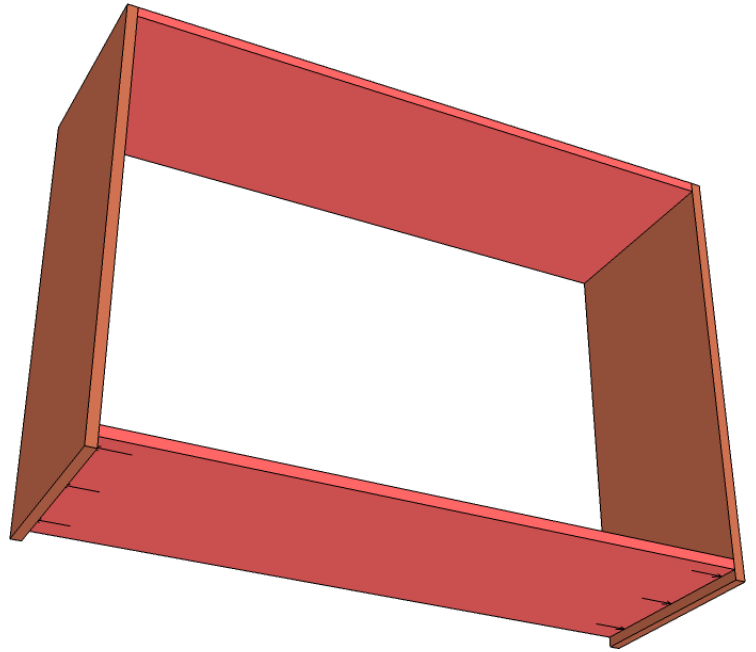
Item	Quantity	Description
48" x 96" x 3/4" plywood	1	Purebond Plywood
48" x 48" x 3/4" plywood	1	Purebond Plywood
1 x 6 x 12'	1	Pine or whitewood board
1 x 2 x 8'	3	Pine or whitewood board
1 x 2 x 4'	1	Pine or whitewood board
48" x 48" x 1/4" beadboard	1	For the back
1-1/4" pocket hole screws	48	
adjustable shelf pins	12	
Wood glue		
Brad nails	handful	
Finish of choice		

Drill pocket holes for 1-1/4" pocket hole screws as indicated by the arrows.



1

Attach the top and bottom panels to the sides. The pocket holes are facing up on the top panel and it is flush with the top of the sides. The pocket holes face down on the bottom panel and the top surface of it is 1-1/2" off of the ground. Use wood glue and 1-1/4" pocket hole screws.

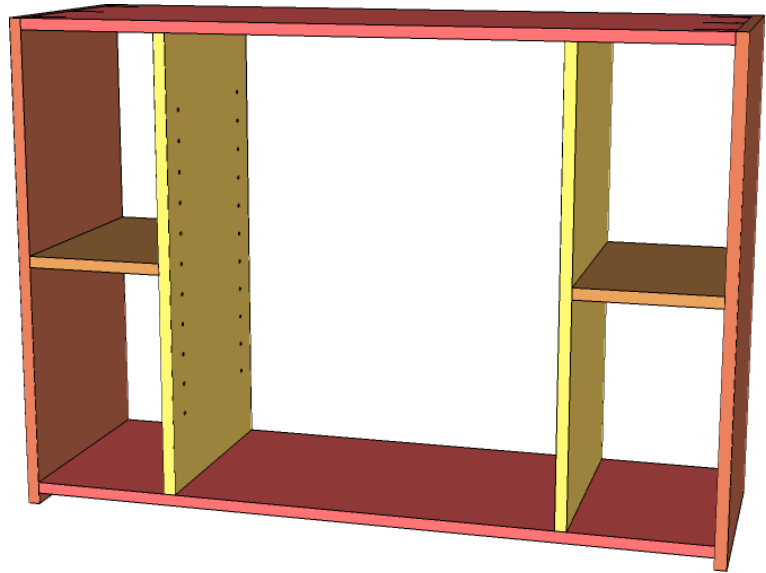


2

Using the smaller shelves in the next step for spacers, attach the two interior dividers. Make sure the shelf pin holes are facing in. Attach with wood glue and brad nails through the top and bottom panels. It will probably be best to complete this step with the assembly laying on it's back.

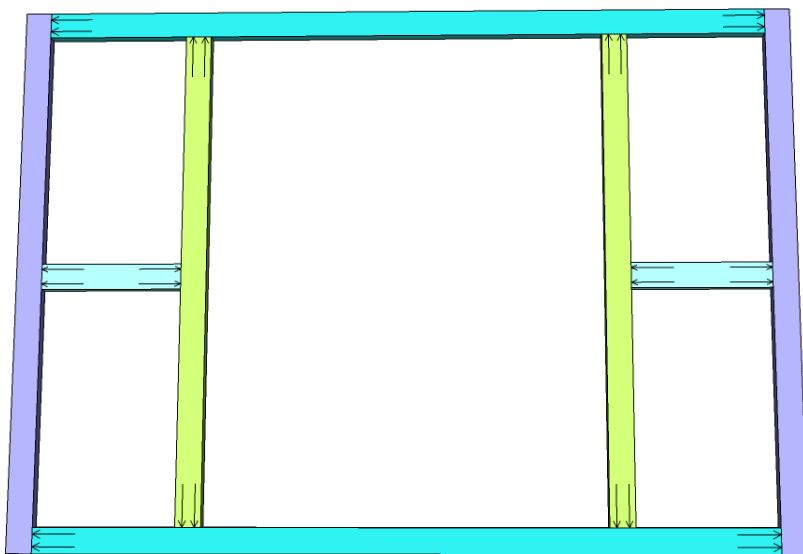
3

Using glue and brad nails secure the outside shelves. These are centered vertically so there should be equal spacing top and bottom.



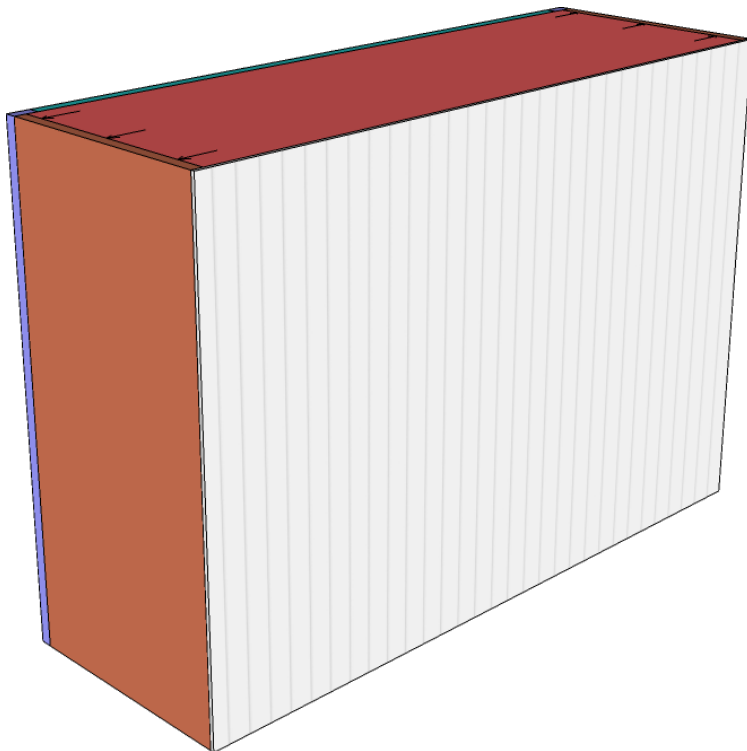
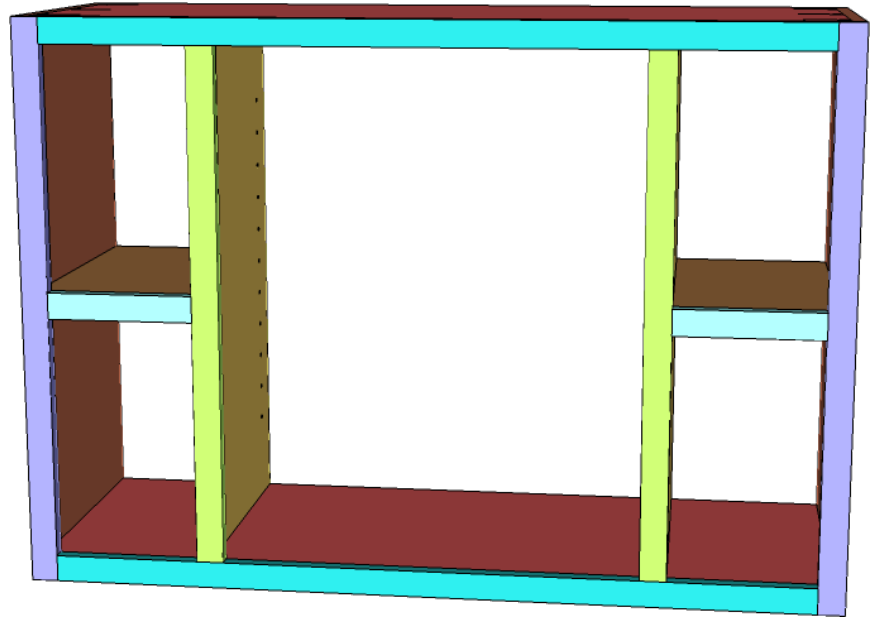
4

Finally, assemble the faceframe with glue and 1-1/4" pocket hole screws. The smaller horizontal boards are centered in the assembly. There should be 15-3/8" from the top of the smaller horizontal boards to the top of the top horizontal board.



5

Attach the face frame to the cabinet with wood glue and brad nails.

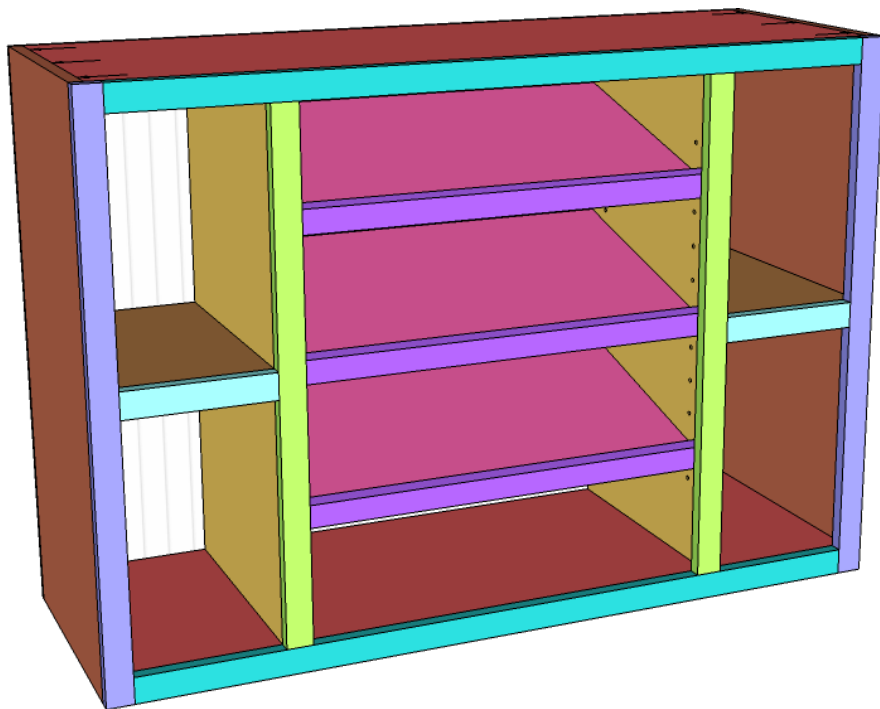
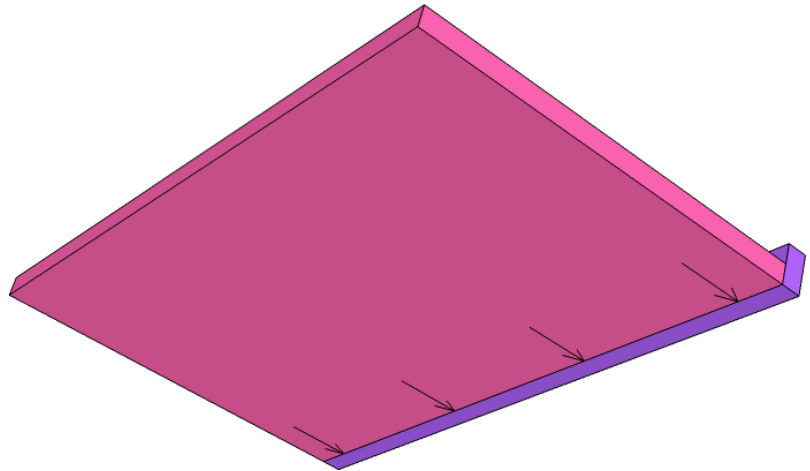


6

Attach the bead board panel to the back side with brad nails only.



Assemble the three adjustable shelves. Use wood glue and 1-1/4" pocket hole screws.



Using shelf pins in the shelf pin holes add the shelves to whatever position you choose. The shelves may be a little bit too deep if you choose less of an angle to hang them. Feel free to trim them down as needed.

9

Using brad nails attach the top slats to the cabinet. These are just to cover up the plywood edges that are exposed on top. Fill any nail holes, sand, and finish as you wish. This would look super cute with a white painted base and a stained wood plank top. If you make one of these be sure to stop by our website and let us know!

