



©2019 WWW.SHANTY-2-CHIC.COM

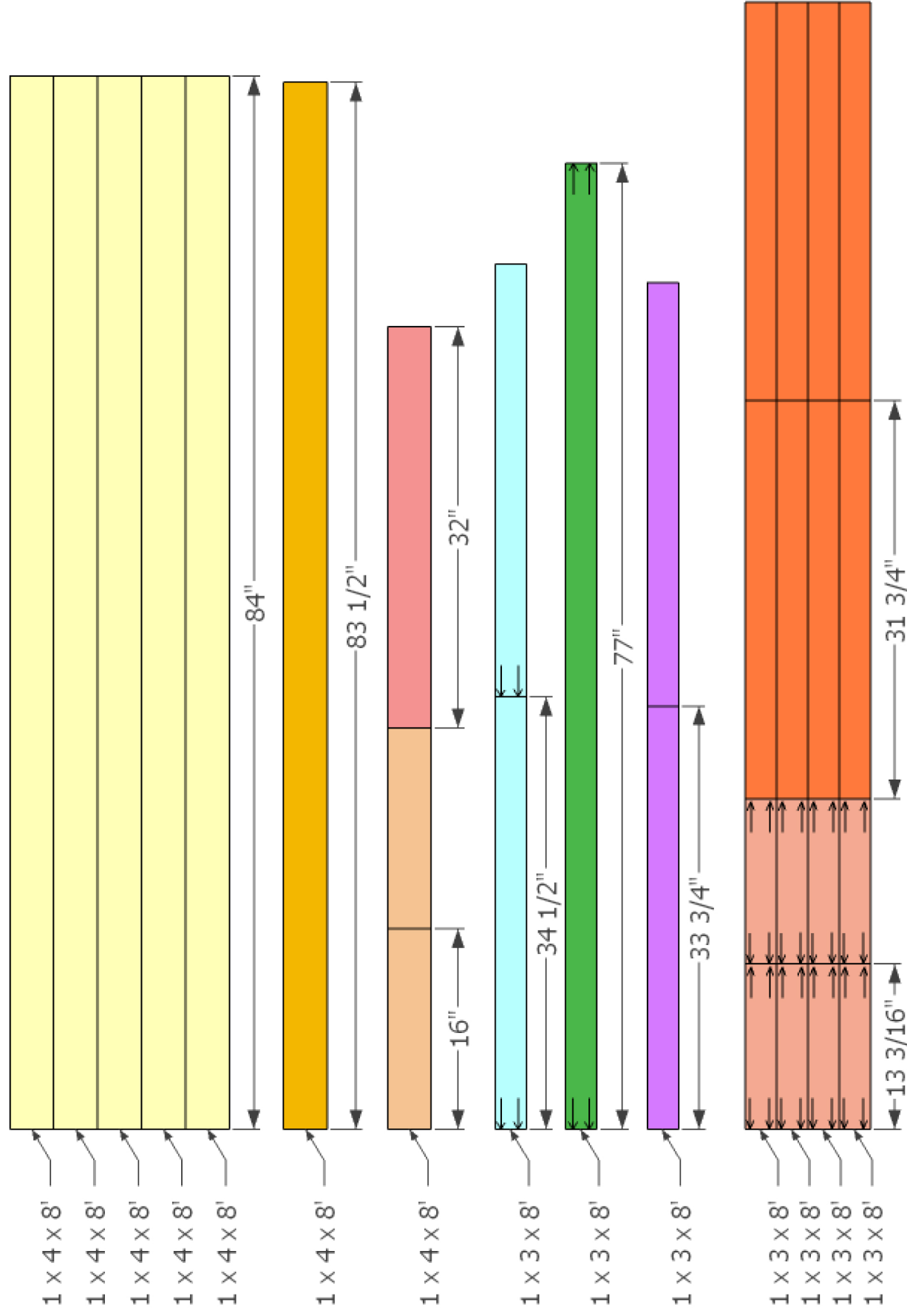


Modern Farmhouse Cabinet

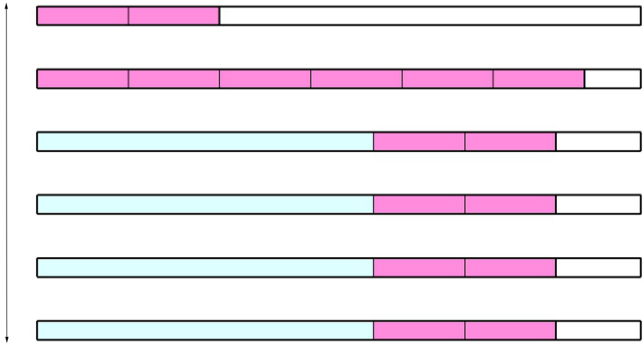
Supply List

Item	Quantity	Description
1 x 4 x 8	7	pine or white wood
1 x 3 x 8	7	pine or white wood
48" x 96"	2	3/4" hardwood plywood
48" x 96"	2	1/4" hardwood plywood
1/4" x 2 x 4 craft boards	6	pine or poplar
pocket hole screws	several	1.25"
hardware		refer to website for information
hinges		refer to website for information
pulls		refer to website for information

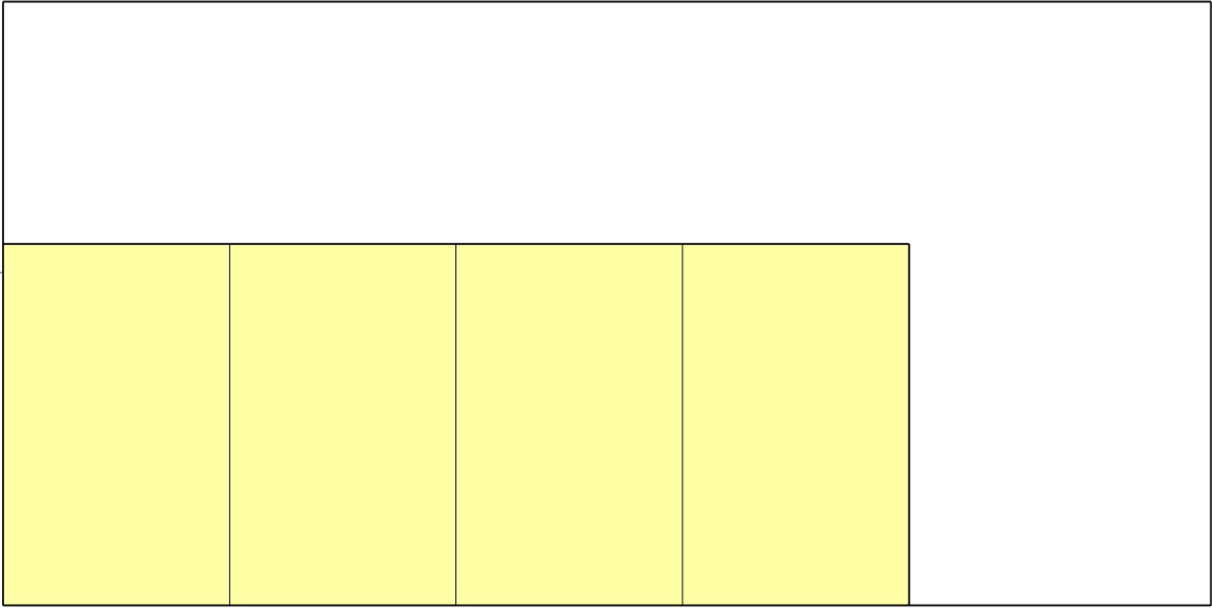
Drill pocket holes for 1-1/4" pocket hole screws as indicated by the arrows.



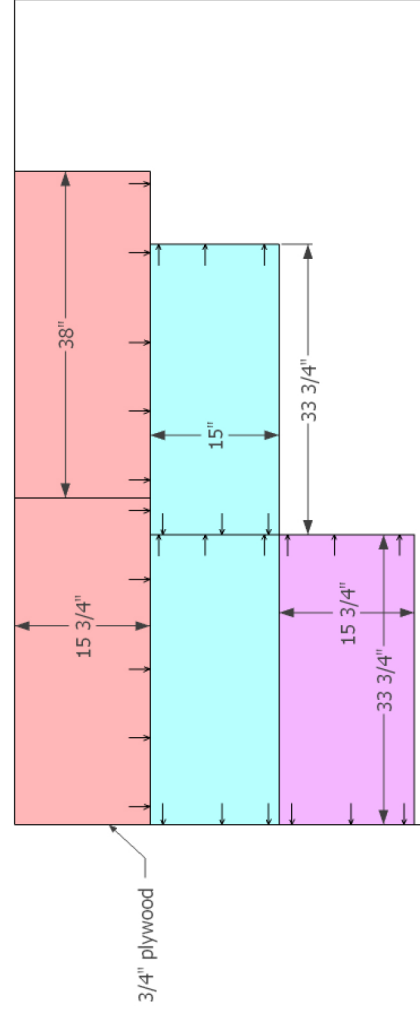
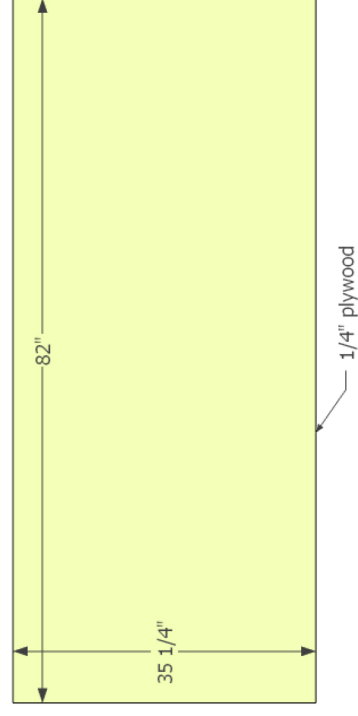
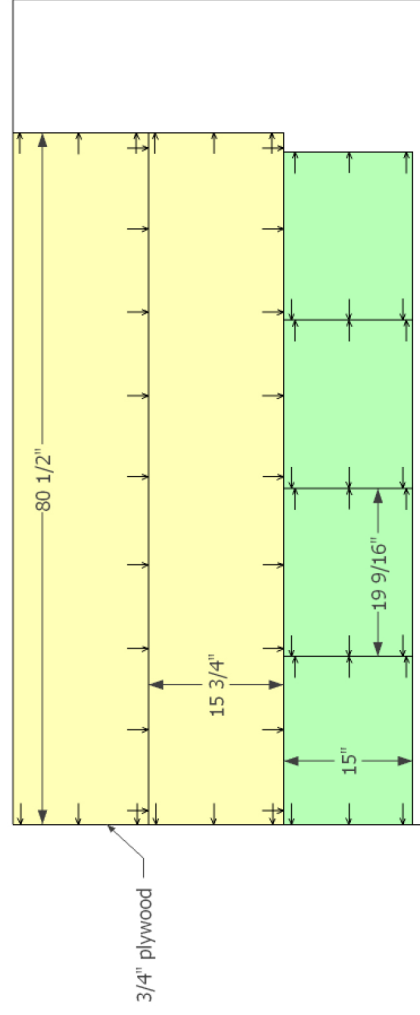
1/4" craft boards
1.5" x 4' long
pine or poplar



1/4" hardwood plywood
4' x 8'

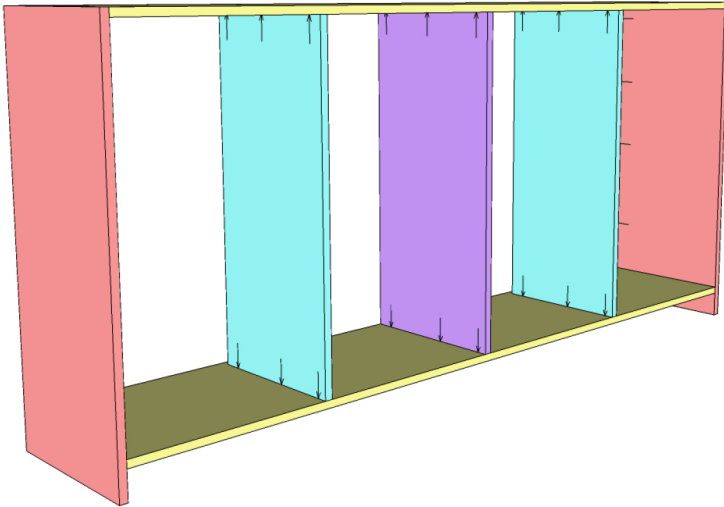
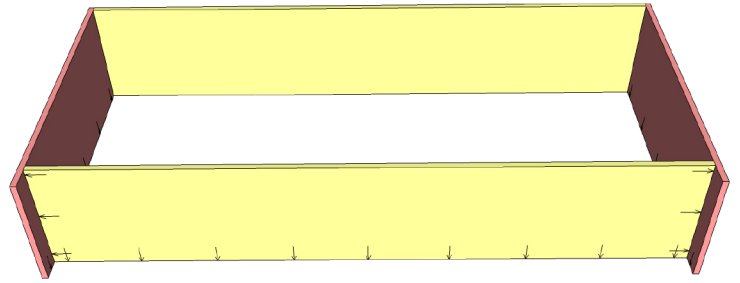


Drill pocket holes for 1-1/4" pocket hole screws as indicated by the arrows.



1

Use glue at every joint in this project. Start assembly by securing the sides to the top and bottom panels. The pocket holes should be facing away from the middle of the cabinet and also facing to the front to secure the face frame later. The top is flush with the top of the side panels and the top of the bottom panel needs to be 3-1/2" from the bottom.

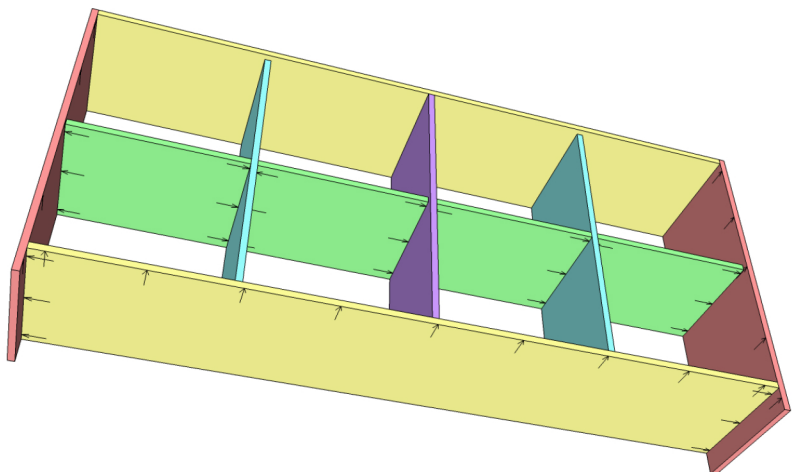


2

Add the vertical dividers. These are spaced evenly with the full width panel being the center panel. The other two dividers should be flush with the back of the cabinet and 3/4" away from the front.

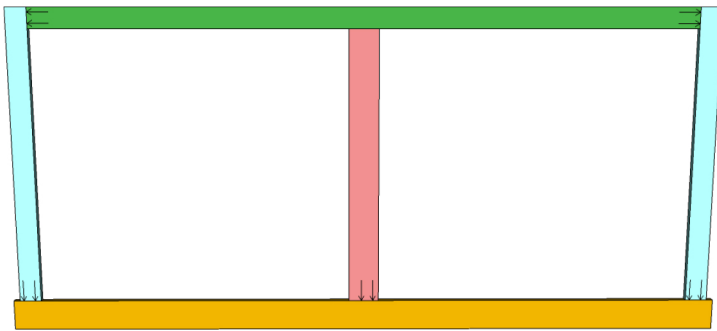
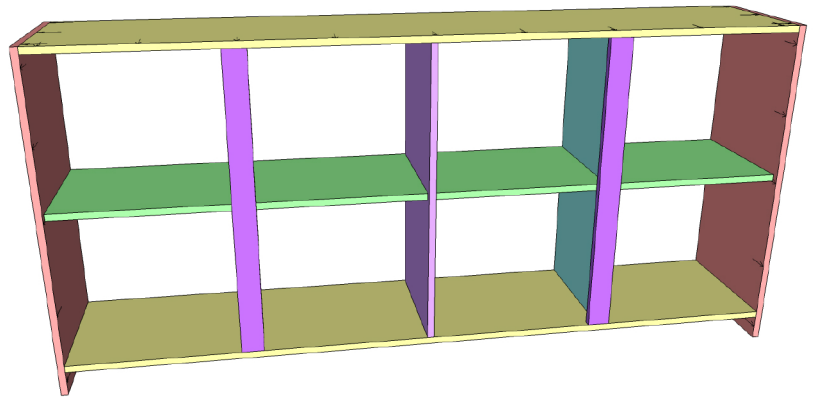
3

Add the shelves at whatever height you wish to use. Make sure the back of the shelves is flush with the back of the cabinet.



4

Nail the two vertical door stops to the front of the vertical panels. These are a tiny bit off center. They should be 18-7/8" from the sides and 18-1/2" from the middle.

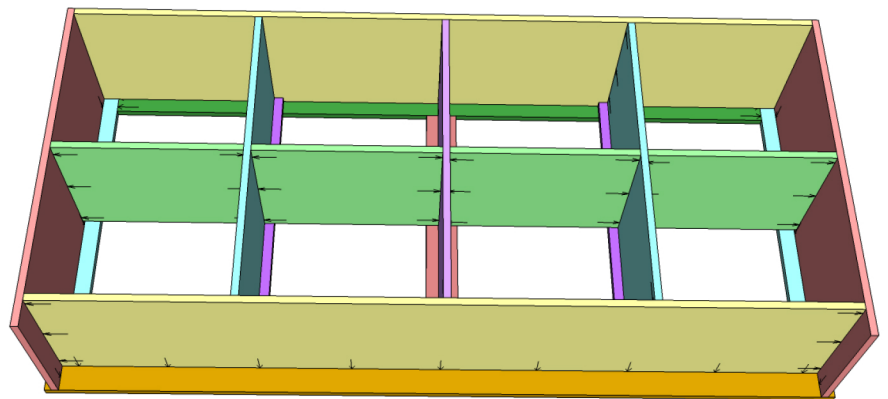


5

Assemble the face frame next. The center piece is centered and both sides should be 3/4" in from the ends of the bottom board. Use 1-1/4" pocket hole screws.

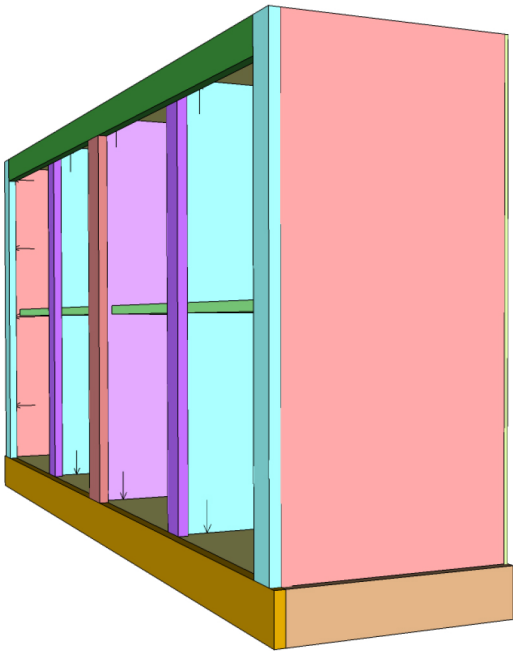
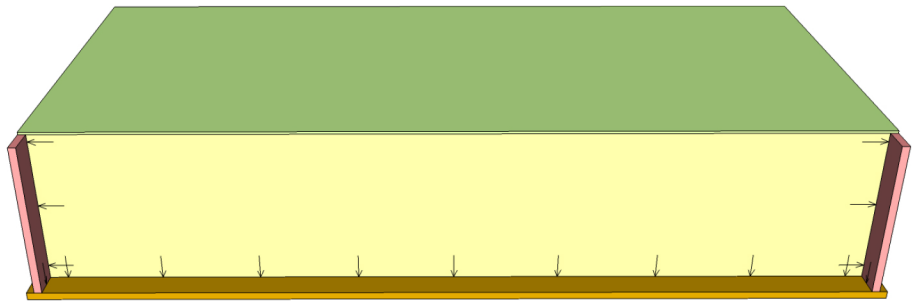
6

Lay the face frame face down with the cabinet on top of it. Secure the face frame by using 1-1/4" pocket hole screws through the side, top, and bottom panels.



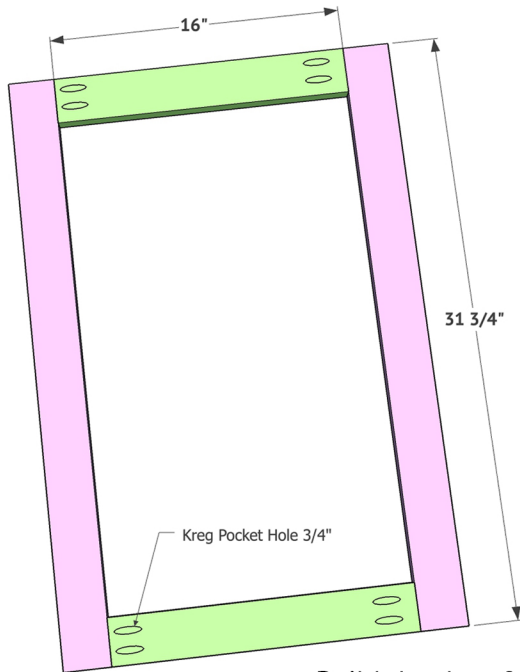


Tack on the back panel with wood glue and brad nails.

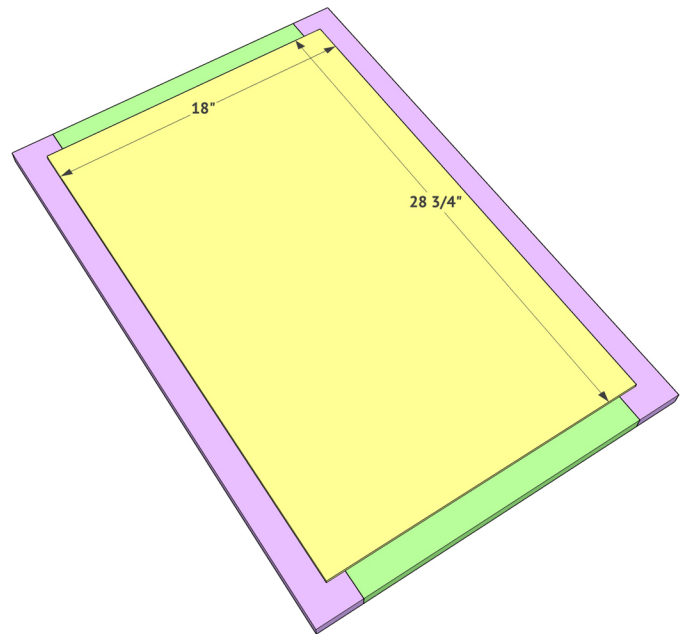


Add the lower trim pieces to the sides with wood glue and brad nails. To reduce the appearance of the brad nails you can nail from the inside of the cabinet.

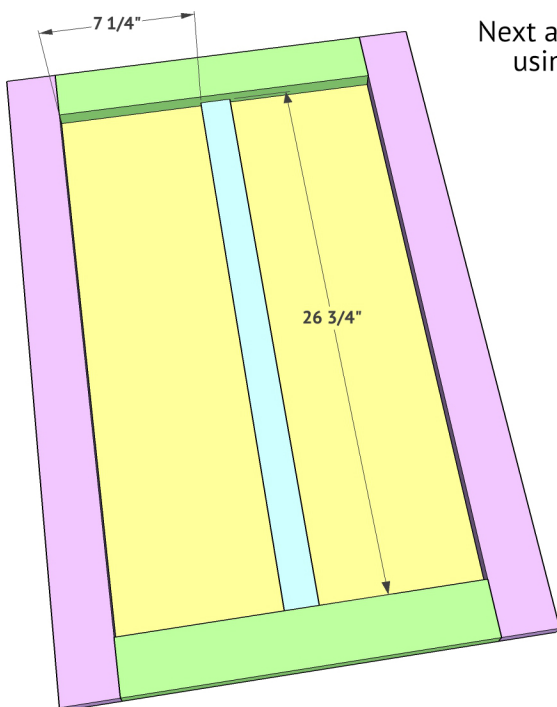
Build the doors!



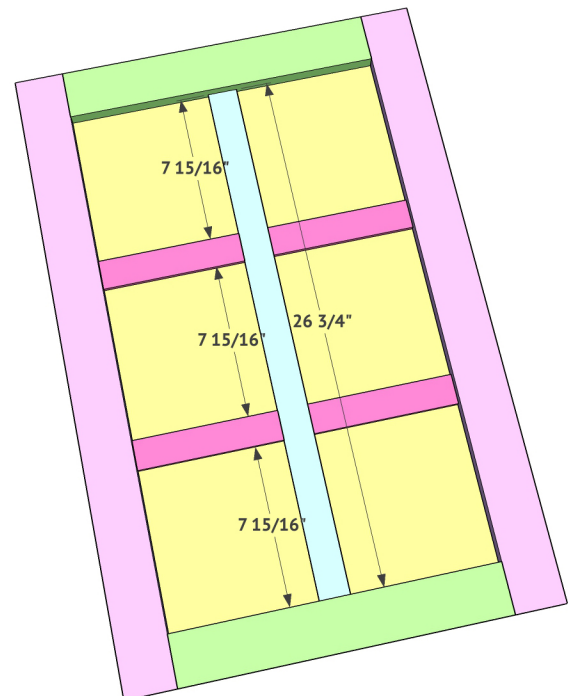
Build the door frame first. The frame is built with 1x3 boards. Add 3/4" pocket holes to the ends of your shorter boards and attach them flush with the ends of the longer boards using wood glue and 1.25" pocket hole screws.



Next, attach the hardwood plywood panel to the back of each door. Attach using wood glue and 1/2" nails through the panel and into the back of the door frame.

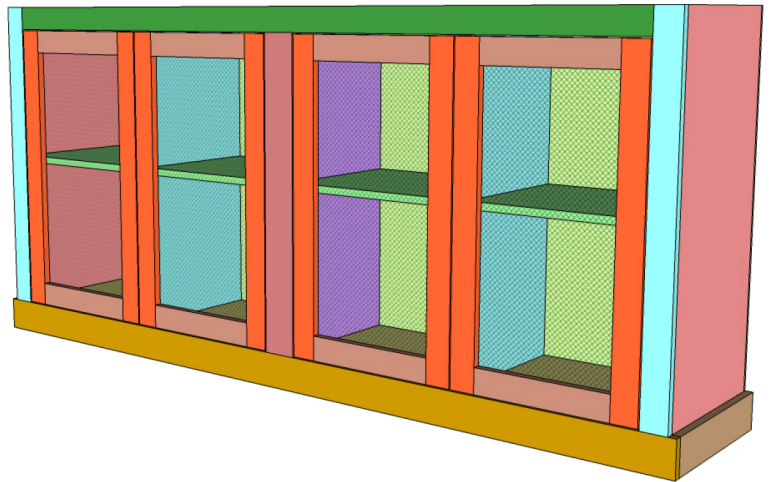


Next add the trim. Attach each piece using wood glue and 1/2" nails.



10

The doors are sized so that there will be 1/8" gap on all sides of door. Mount the doors with overlay hinges.



11

Using glue and brad nails attach the top planks. Fill any nail holes, sand, and finish any way you wish. If you decide to make one of these be sure to stop by our website and let us know!

